



All of these archaeological sources are extraordinary even in the European context. The learning about them is a long and challenging process that will flourish over time. Until now, these treasures were not widely known in the public. The praha-archeologica.eu portal opens the door to this archaeological heritage.

The praha-archeologica.eu portal is the main outcome of the project Integrate Information System of Archaeological Sources of Prague (IIS_APP) which is the joined project of the Institute of Archaeology of the Czech Academy of Sciences, Prague v. v. i. and the National Heritage Institute. The project was compiled in 2012. During the period from 2013 to 2017, it is financed by the National and Cultural Identity (NAKI) Programme of the Ministry of Culture of the Czech Republic programme (reg. no. 13P01OVV014).

www.praha-archeologica.eu

www.arup.cas.cz • www.npu.cz • www.archeopraha.cz
www.muzeumprahy.cz • www.archaiapraha.cz

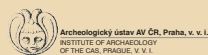


PRAGUE AS AN ARCHAEOLOGICAL SITE

The history of Prague covers more than a thousand years. It was the centre of the state and seat of rulers for many consecutive years beginning in the Early Middle Ages. Yet, the earliest traces of human existence in Prague are much older. The abundance of water sources and fertile lands, as well as its favourable position at the junction of trade routes created suitable conditions for the settlement of the Prague basin as early as the Palaeolithic period. The entire area of Prague is covered with the remains of human life from various periods of prehistory which makes it one, large archaeological site.

Humans living in the past left architectural remains especially in the historic centre of Prague. As a result, Prague has retained an astonishing collection of historic monuments which have been acknowledged as part of the world cultural heritage. In addition to historic structures of various periods, this collection is also comprised of the monuments that remain hidden to both the residents and countless tourists – the outstanding and vast archaeological remains.

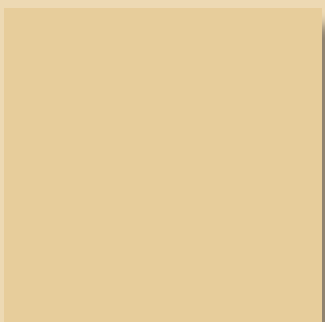
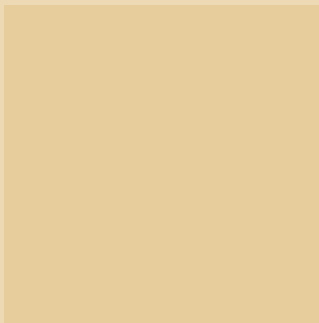
Romanesque structures of the city's historic centre, luxurious goods as well as objects of everyday use, and the preserved massive layers of debris of buildings, landfills, and rubbish are also part of this collection. Reaching up to several metres, these 'cultural' layers provide us with information about the development and changes of Prague from its early times after the mid-9th century to its heyday in the Late Middle Ages and the later Industrial Period.



INTEGRATE INFORMATION SYSTEM OF ARCHAEOLOGICAL SOURCES OF PRAGUE

Praha-archeologicka.eu is a website providing information about the results of the archaeological study of Prague. The portal gives an opportunity to visit layers underneath Prague, trace the Prague past, share the excitement of exploring the unknown, learn about the impeccability of forgotten technologies and crafts, and become familiar with the endless number of archaeological topics.

As for the archaeologists and their associates, the portal should facilitate their path to the systematic study of the past and lead to faster and more efficient research. Businessmen and property owners can find important information for their investments while materials for urban planning and city development may be useful for municipal institutions and executive authorities. The heritage sphere will provide fast and comprehensive information which will help in decision making about the necessary protection of archaeological sites.



The main sources provided to the wider public by the portal www.praha-archeologicka.eu are:

- Information about the latest finds and outcomes of long-term research
- Ideas for thematic walks and trips
- Links to popular and expert literature

The information on the portal is divided into five basic sections, in a map or data windows. In order to get more detailed information about the archaeology of Prague, open the various PRESENTATIONS where you will find texts complemented with photographs from research, examples of finds, models of no longer existing structures, and other research documentation.

We especially invite you to visit the sections **PRAGUE – THE CITY OF ARCHAEOLOGY** and **DISCOVER ARCHAEOLOGY IN PRAGUE**.

All information will be gradually updated and new data will be added!



PRAGUE – THE CITY OF ARCHAEOLOGY

Enter the world of former Prague

■ **Archaeological heritage (discovered past – buildings and compounds, settlements, burial sites and other)**

Whether sites are well-known, unknown or just hidden gems, many examples are accessible at the places of discovery

■ **No longer existing architecture (records and documentation of buildings)**

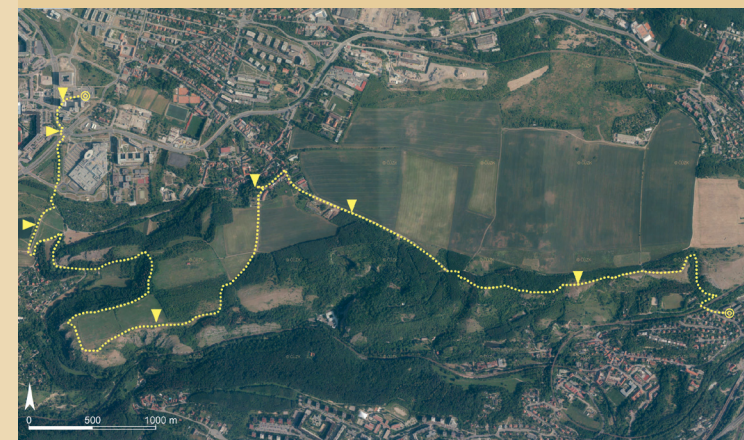
Changing appearance of historical Prague – discover how selected architectural remains have been documented by archaeological or historical research

■ **Material culture (selected items)**

Samples of the abundant collection of archaeological findings, usually inaccessible to the public

■ **Prague in the past (reconstruction of Prague development – settlements, burial sites, fortification)**

The latest outcomes of our research about the past and the development of Prague



DISCOVER ARCHAEOLOGY IN PRAGUE

Discover and visit the relics of the past

- City walks
- Tips for trips

We invite you to visit archaeological sites in the city centre and wider vicinity!